

Fill My Soul

EMaj7



Leader:

Lord, you are my God and king
 Be with me, Lord, e - v'ry - day
 Lord, I know the vic - t'ry's won



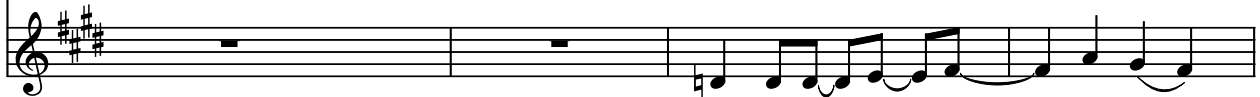
Church:

Lord, you are my God and king
 Be with me, Lord, e - v'ry - day
 Lord, I know the vic - t'ry's won

DMaj7



Lord, you are my e - v'ry - thing I
 Guide me as I kneel to pray I
 All my sin you've o - ver - come Your



Lord, you are my e - v'ry - thing
 Guide me as I kneel to pray
 All my sin you've o - ver - come

EMaj7



need your love to make me whole I
 need to know you're in con - trol I
 grace has tru - ly made me whole I



I need your love to make me whole
 I need to know you're in con - trol
 Your grace has tru - ly made me whole

DMaj7



need your love to fill my soul.
 need your love to fill my soul.
 love the way you fill my soul.



I need your love to fill my
 I need your love to fill my
 I love the way you fill my

EMaj7 DMaj7

Soul... fill my soul with

Soul... fill my soul with

Detailed description: This system contains the first two staves of music. The top staff is a vocal line in treble clef with a key signature of three sharps (F#, C#, G#). It begins with a whole note 'Soul...' followed by quarter notes 'fill', 'my', 'soul', and a final quarter note 'with'. The bottom staff is a piano accompaniment in treble clef, featuring sustained chords and moving lines. Above the first two measures of the piano part are the chord labels 'EMaj7' and 'DMaj7'.

EbMaj7 EMaj7

your love. Fill my soul...

your love. Fill my soul...

Detailed description: This system contains the next two staves of music. The top staff is a vocal line in treble clef. It starts with a quarter note 'your', a quarter note 'love.', a quarter rest, a quarter note 'Fill', a quarter note 'my', and a half note 'soul...'. The bottom staff is a piano accompaniment in treble clef. Above the first two measures of the piano part are the chord labels 'EbMaj7' and 'EMaj7'.

DMaj7 EbMaj7

fill my soul with your love.

fill my soul with your love.

Detailed description: This system contains the final two staves of music. The top staff is a vocal line in treble clef. It begins with a quarter note 'fill', a quarter note 'my', a quarter note 'soul', a quarter rest, a quarter note 'with', a quarter note 'your', and a final quarter note 'love.'. The bottom staff is a piano accompaniment in treble clef. Above the first two measures of the piano part are the chord labels 'DMaj7' and 'EbMaj7'.